



COMPLETE RANGE



SAFE



RELIABLE AND STURDY



## **Ditec Cubic**

EN

Underground electromechanical swing gate actuator



# Ditec Cubic

The invisible automation  
For medium and heavy duty

## Ideal for architecturally fine gates

Ditec Cubic is an underground automation for swing gates. Unobtrusive on its visible parts, the product allows the gate to open and close without interfering with its look and style. This makes it the ideal solution for fine gates and entrances, such as those fitted to architecturally attractive or historically significant buildings, or for any application where style, look or elegance should be kept unaltered.

## Concealed, sturdy and versatile

Practical and simple to operate, the automation consists of a stainless steel or electrically galvanised steel foundation casing fitted below the ground, where the geared motor and all mechanical linkages which operate the gate leaves are housed.

This highly versatile solution which can be customised to individual requirements:

- allows the gate to be opened at a very wide angle, up to 180°;
- combined with Ditec electrical control panels, the automation allows the motor to successfully overcome any initial friction caused by bad weather conditions such as ice;
- can also be used in applications requiring fast access.

## Distinctive features

- The gear motors are housed in a sturdy stainless steel or electrically galvanised steel foundation casing to increase resistance to weathering; the automation is fixed by means of stainless steel screws pre-built in the foundation casing
- In the 110° angle version **01**, rotation is done by a lever system, whilst in the 180° angle version rotation is done by a chain **02**
- CE mark
- Aesthetically pleasing release system with key and lever which may be operated from both sides
- Works even at low temperatures
- Motor protected by an internal temperature probe
- Supplied with all security, control and monitoring accessories
- Wing support system on hardened steel ball

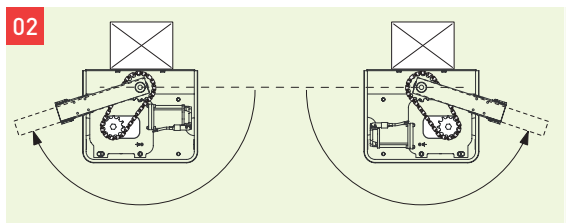
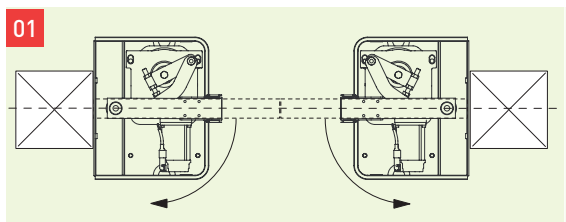
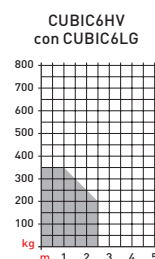
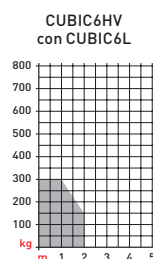
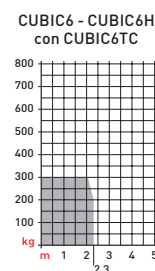
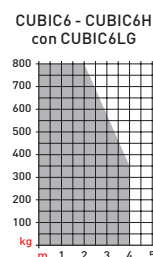
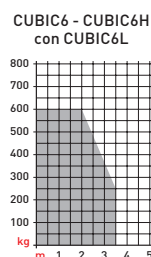
## Special accessories

- Internal mechanical stop both for opening and closing operations
- Magnetic limit switches
- DIN key

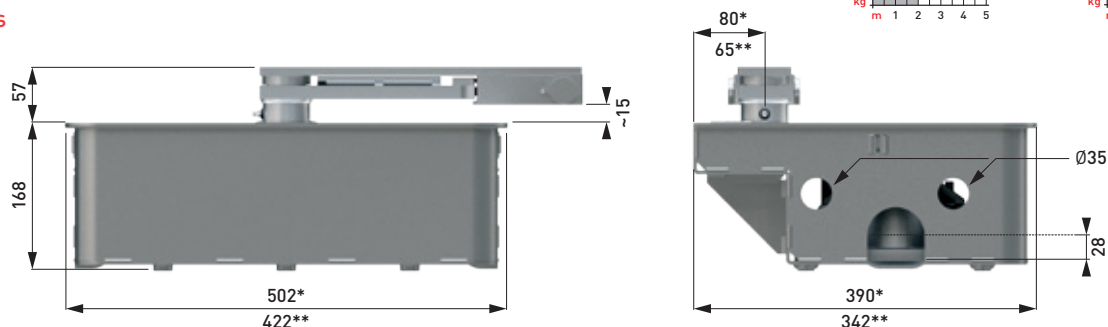
## Product range

CUBIC6HV	up to 1.5 m
CUBIC6 - CUBIC6H	up to 3.5 m

## Operation limits



## Dimensions

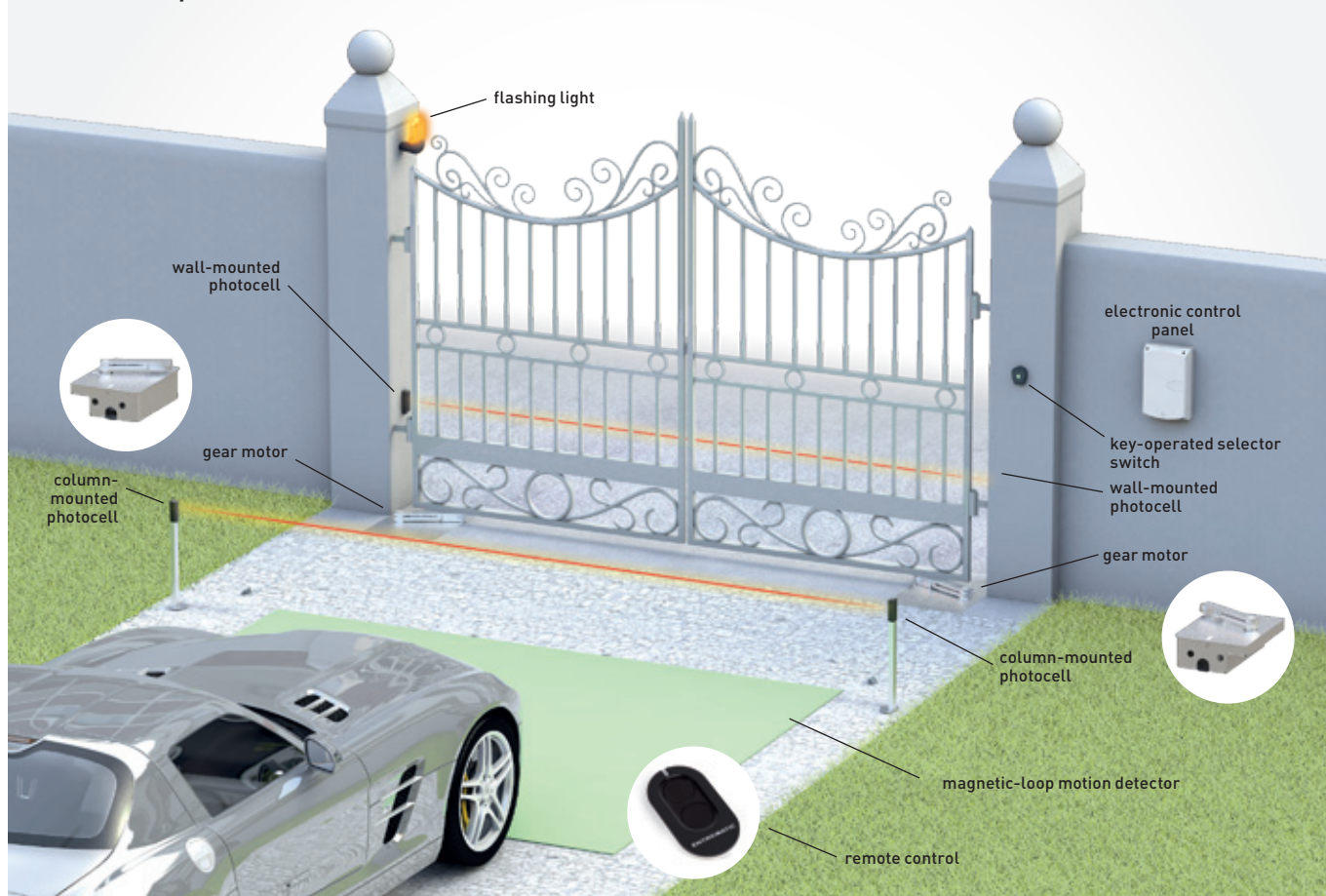


\*Ditec CUBIC6CG

\*\*Ditec CUBIC6C - CUBIC6CM - CUBIC6CY

# Example of installation and technical characteristics

Ditec Cubic - Specimen installation



## Technical specifications

Description	Cubic 6	Cubic 6H	Cubic 6HV
Electromechanical actuator	irreversible for up to 4 m wide wing	irreversible for up to 4 m wide wing	irreversible for up to 2.5 m wide wing
Stroke control	magnetic limit switch (optional)	magnetic limit switch (optional)	magnetic limit switch (optional)
Maximum capacity	800 kg x 2 m 350 kg x 4 m	800 kg x 2 m 350 kg x 4 m	350 kg x 1 m 200 kg x 2.5 m
Service index	3 - frequent	4 - intensive	4 - intensive
Intermittent operation	S2 = 15 min S3 = 25%	S2 = 30 min S3 = 50%	S2 = 30 min S3 = 50%
Power supply	230 V AC / 50 Hz	24 V DC	24 V DC
Power input	1.5 A	12 A	12 A
Torque	340 Nm	340 Nm	220 Nm
Opening time	18 s/90°	12÷45 s/90° with CUBIC6L 15÷55 s/90° with CUBIC6LG	6÷25 s/90° with CUBIC6L 8÷30 s/90° with CUBIC6LG
Actuator maximum opening	110° or 180°	110° or 180°	110°
Release system for manual opening	key-operated	key-operated	key-operated
Operating temperature	-20°C / +55°C (-35°C / +55°C with NIO enabled)	-20°C / +55°C (-35°C / +55°C with NIO enabled)	-20°C / +55°C (-35°C / +55°C with NIO enabled)
Protection degree	IP 67	IP 67	IP 67
Control panel	E2 LOGIC M	LCU40H	LCU40H

	Cubic 6	Cubic 6	Cubic 6H-6HV
<b>TECHNICAL FEATURES</b>			
Control panel 433MHz/868MHz interchangeable receiver module	ref. E2 for 1 or 2 230 V AC motor with built-in radio	ref. LOGIC M for 1 or 2 230 V AC motors	ref. LCU40H for 1 or 2 24 V DC motors with built-in radio
Mains power supply	230 V AC / 50 Hz	230 V AC / 50 Hz	230 V - 50/60 Hz
Motor power supply	230 V AC / 1 x 5 A 230 V AC / 2 x 2.5 A	230 V AC / 1 x 5 A 230 V AC / 2 x 2.5 A	24 V DC / 2 x 12 A
Accessories power supply	24 V DC / 0.5 A	24 V DC / 0.5 A	24 V DC / 0.5 A
Operating temperature	-20°C / +55°C	-20°C / + 55°C in standard conditions -35°C / +55°C with NIO enabled	-20°C / + 55°C in standard conditions -35°C / +55°C with NIO enabled
Control panel protection level	IP55	IP55	IP55
Control panel dimensions (mm)	187x261x105	187x261x105	238x357x120
* Limitation of current absorbed by accessories on standby			
<b>INPUTS</b>			
Opening control	Shared with inching control, selected with dip-switch	■	■
Partial opening control	■ only by radio	■	■
Close control	Shared with emergency stop, which can be selected via dip-switch	■	■
Stop control	■	■	■
Inching control	Shared with opening control, selected via dip-switch	■	■
Hold-to-run control	■	■	■
<b>OUTPUT</b>			
Flashing light	230 V AC	230 V AC and 24 V DC	24 V DC
Electrically operated lock	12 V DC / 15 W	12-24 V DC / 1.2 A 12 V AC / 15 W	12 V DC / 15 W
Gate-open warning light (ON/OFF)	■	■	■
Gate-open warning light with proportional blink rate			■
Courtesy light	Yes, up to 100 W, with only 1 motor, selected via dip-switch	Yes, up to 100 W, with only 1 motor, selected via jumper	Yes, shared with electrically operated lock or flashing light
<b>PROGRAMMABLE FUNCTIONS</b>			
Force adjustment	Electronic	Manually selected transformer	Electronic
Speed setting			■
Soft Start/Soft Stop			Adjustable
Braking/Slowing down			Adjustable
Stop approach			Adjustable
Operation time	Adjustable	Adjustable	Adjustable
Automatic re-closing time	Adjustable	Adjustable	Adjustable
Integrated datalogging (counters and recent alarm history)			■ can be viewed on the display and on a PC with Amigo SW
Extended datalogging with micro SD (in-depth records for every event)			■ can be viewed on a PC with Amigo SW
FW update			■ with micro USB and Amigo SW or MicroSD
<b>SAFETY AND PROTECTION FUNCTIONS</b>			
Emergency stop	■	■	■
Safe closing (inversion)	■	■	■
Safety Test Facility (for automatic safety devices)		■	■
ODS – Obstruction Detection System (causes the gate to stop or reverses movement when an obstacle is detected)	■	■	■
NIO - Antifreeze system		■	■
<b>OPTIONAL ACCESSORIES</b>			
Batteries			■ with SBU
Provision for control-panel integrated batteries			■
Stand-alone solar-power connection			■ with SBU
Hybrid solar-power connection			■ with SBU
8.2 KΩ-resistance safety edge	■ with accessory	■ with accessory	■ with accessory
Magnetic loop detector	■ with LAB9	■ with LAB9	■ with LAB9



### Entrematic Italy S.p.A.

Largo U. Boccioni, 1 · 21040 Origgio (VA) · Italy

Tel +39 02 963911 · Fax: +39 02 9650314

ditec@entrematic.com

www.ditecentrematic.com · www.entrematic.com

Present in: France, Germany, Spain, Turkey and Canada.

For addresses and contact information see our website [www.ditecentrematic.com](http://www.ditecentrematic.com)

